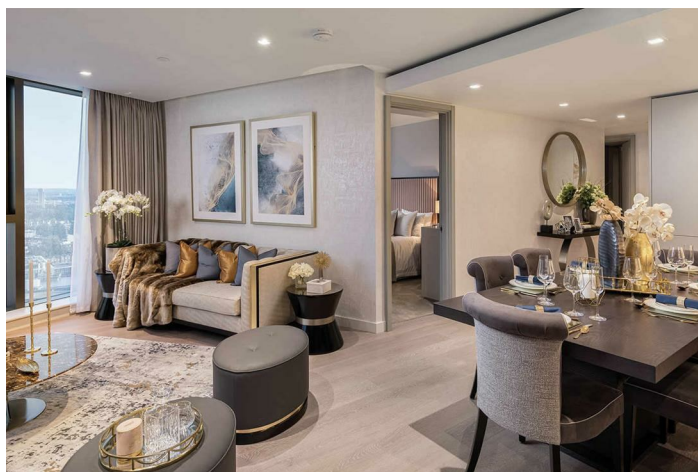


SALE



Apartment (EPC Rating:)

THE RESIDENCE , PADDINGTON GREEN, LONDON

Asking price

£998,000



I Bedroom Apartment located in London W2

Belmont International | Your premier choice for exceptional property service, competitive rates and a tailored client experience.

CONTACT US TODAY!

West End Gate | I-Bedroom Apartment | 640 sq ft | Prime Zone I | Completing Q1 2026 | £998,000

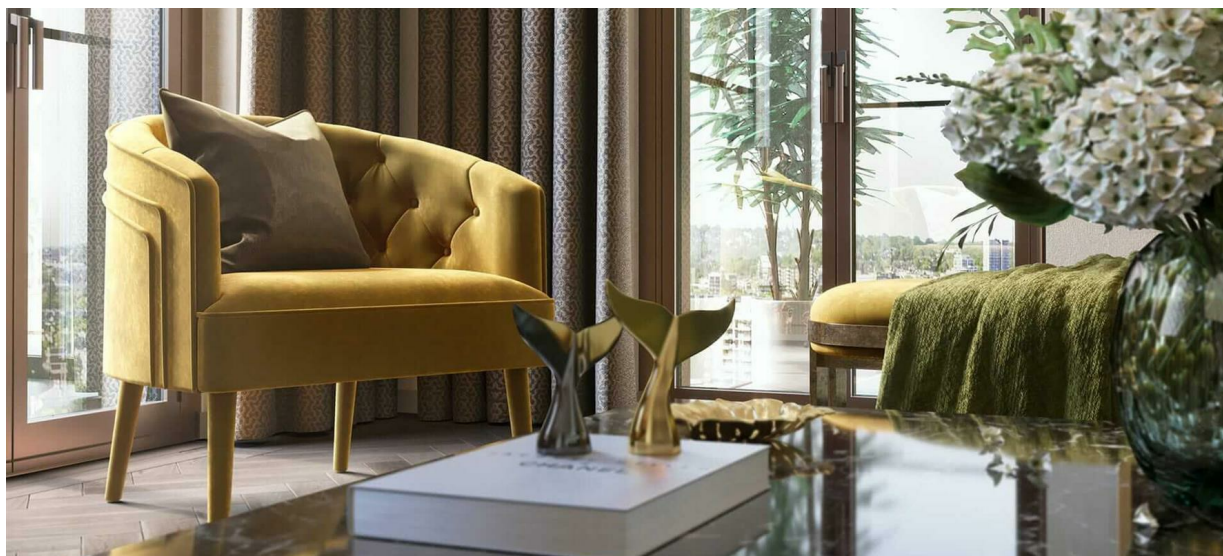
West End Gate, a landmark development at the gateway to Londons vibrant West End. Set in one of the cities most desirable postcodes, this striking architectural masterpiece offers a modern take on classic London elegance.

One of Londons premium residential addresses, combining timeless design with contemporary living. Perfectly situated between Hyde Park and Regents Park, residents can enjoy the charm of nearby Little Venice, the sophistication of Mayfair, and the cultural richness of Soho and Marylebone — all just moments away.

The development boasts a state-of-the-art wellness suite, including a large swimming pool, sauna, steam room, treatment rooms, and an elegantly designed gym. Additional exclusive amenities include a private cinema, a beautifully curated residents lounge, and a private dining room — ideal for entertaining or relaxing in style.

Unmatched connectivity is another key feature, with Edgware Road Station just a one-minute walk away, offering access to four major Underground lines, ensuring fast and easy travel across London.

This brand new I-bedroom apartment, completing in Q1 2026, presents a great opportunity to own a home in one of Londons most prestigious new developments.



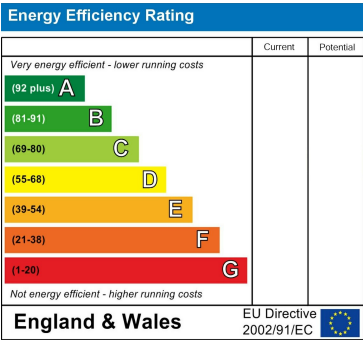
- Prime Zone 1 Central London location (W2)
- Spacious 1 Bedroom Apartment
- Luxury development by Berkeley Group
- 1-minute walk to Edgware Road Underground (4 lines)
- Close to Paddington Station (Heathrow Express & Crossrail)
- State-of-the-art Wellness Suite
- 24-hour Premium Concierge Service
- Beautiful landscaped private gardens
- Private Cinema for residents & Gym



Council Tax Band

New Build

Energy Performance Graph



Call us on

02087852025

info@belmontlondon.com

belmontlondon.com

Agents Note: Whilst every care has been taken to prepare these particulars, they are for guidance purposes only. All measurements are approximate and are for general guidance purposes only and whilst every care has been taken to ensure their accuracy, they should not be relied upon and potential buyers are advised to recheck the measurements.